

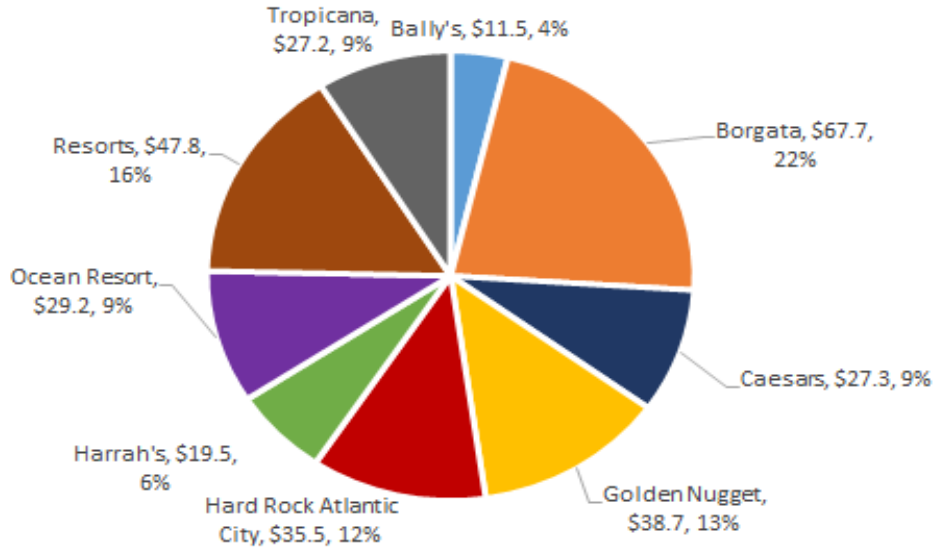
Spectrumetrix Atlantic City Gaming Revenue Analysis

AC Game Dashboard

October 2020

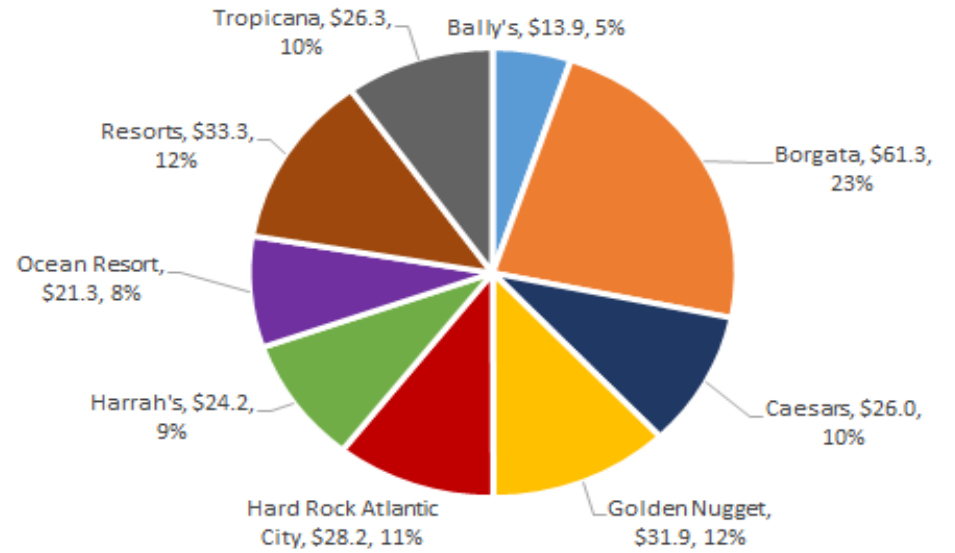
GGR Share October 2020

(\$MM)

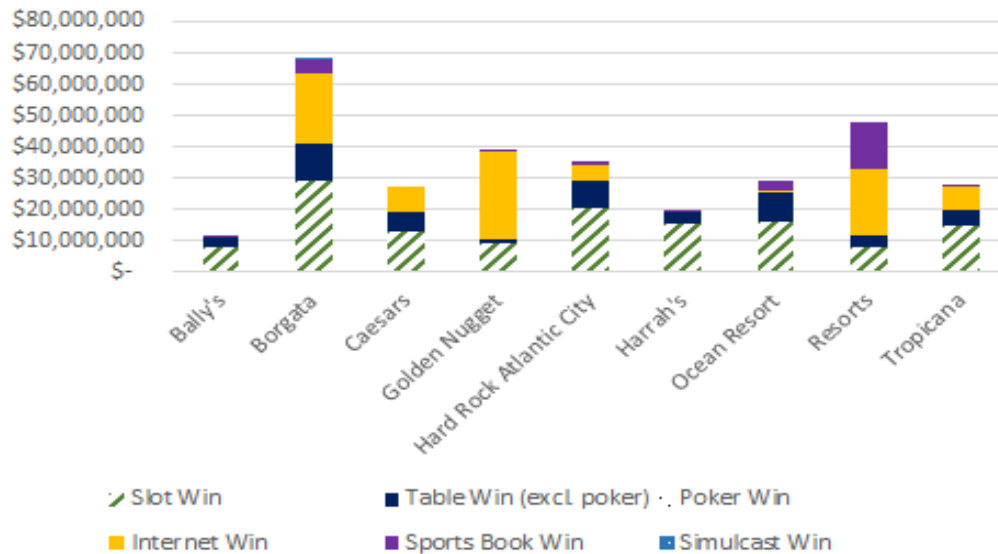


GGR Share October 2019

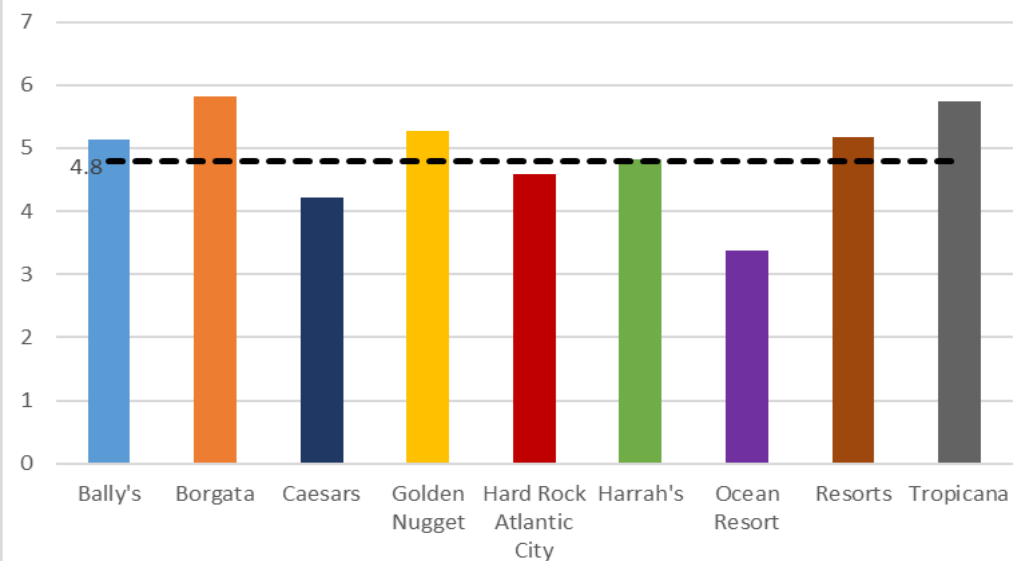
(\$MM)

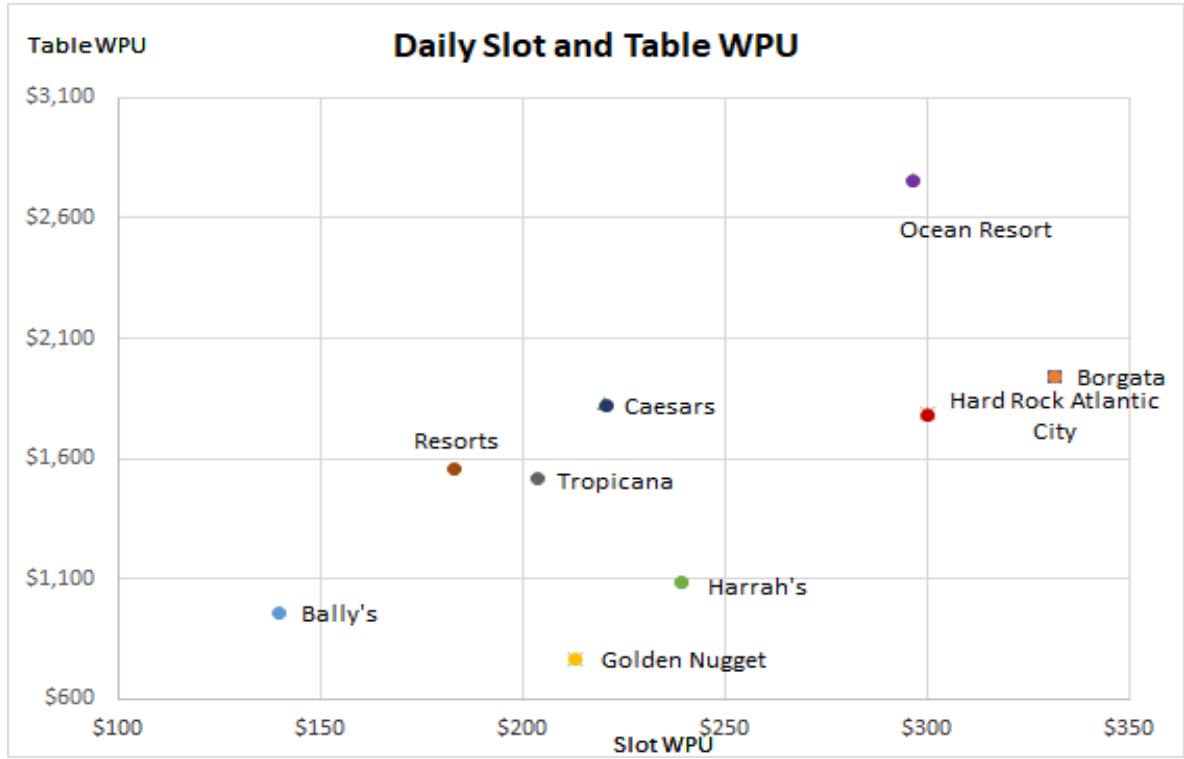


Win Distribution



Win/Slot Promo Credit





Dollar amounts in millions, except daily wins-per-unit (WPU) and win-per-position (WPP).

* "Positions" is based on assumption of one per slot machine and average of six positions per table game.

The Atlantic City Gaming Revenue Analysis© is a copyright of the Spectrum Gaming Group and Management Science Associates. It may not be forwarded, retransmitted or reproduced without permission.

Spectrumetrix Atlantic City Gaming Revenue Analysis AC Game Summary

OCTOBER 2020	Month	Prior Year	Var. %	L3M	L3M PY	Var. %	L12M	L12M PY	Var. %
Slot Total Win	\$132.9	\$147.5	(9.9%)	\$421.0	\$515.0	(18.3%)	\$1,194.7	\$1,910.0	(37.4%)
Handle	\$1,439.6	\$1,629.7	(11.7%)	\$4,468.1	\$5,656.8	(21.0%)	\$12,958.2	\$21,232.6	(39.0%)
Hold Percent	9.2%	9.0%	2.0%	9.4%	9.1%	3.5%	9.2%	9.0%	2.5%
Units	17,538	17,789	(1.4%)	17,608	17,784	(1.0%)	17,692	17,802	(0.6%)
WPU	\$244	\$267	(8.6%)	\$260	\$315	(17.4%)	\$264	\$294	(10.1%)
Promo credits	\$27.7	\$27.4	0.9%	\$86.1	\$97.4	(11.6%)	\$227.6	\$348.6	(34.7%)
Table Games Total Win	\$52.8	\$53.0	(0.4%)	\$154.3	\$191.7	(19.5%)	\$446.3	\$734.8	(39.3%)
Drop	\$328.9	\$318.2	3.4%	\$984.2	\$1,145.5	(14.1%)	\$2,822.2	\$4,453.8	(36.6%)
Hold Precent	16.1%	16.7%	(0.6%)	15.7%	16.7%	(6.3%)	15.8%	16.5%	(4.1%)
Units	1,044	1,089	(4.1%)	1,046	1,091	(4.2%)	1,066	1,091	(2.3%)
WPU	\$1,631	\$1,571	3.9%	\$1,603	\$1,909	(16.0%)	\$1,639	\$1,845	(11.1%)
Slot + Tables Total Win	\$185.6	\$200.5	(7.4%)	\$575.3	\$706.7	(18.6%)	\$1,641.0	\$2,644.8	(38.0%)
Positions	23,802	24,323	(2.1%)	23,884	24,332	(1.8%)	24,092	24,351	(1.1%)
WPP	\$252	\$266	(5.4%)	\$262	\$316	(17.1%)	\$266	\$298	(10.4%)
Poker Total Win	\$0.5	\$1.7	(73.6%)	\$0.5	\$6.6	(93.0%)	10.3	\$27.5	(62.5%)
Units	132	191	(30.9%)	136	206	(34.1%)	173	205	(15.3%)
WPU	\$113	\$295	(61.8%)	\$37	\$346	(89.4%)	\$241	\$368	(34.6%)
SportsBook Win	\$24.6	\$18.8	30.9%	\$54.5	\$47.6	14.5%	\$142.8	\$116.5	22.5%
Simulcast Win	\$0.1	\$0.2	(13.8%)	\$0.4	\$0.6	(29.0%)	\$1.2	\$2.2	(47.8%)
Internet Win	\$93.5	\$45.2	106.7%	\$268.9	\$127.5	110.9%	\$877.5	\$440.2	99.4%
Total Gross Gaming Revenue	\$304.3	\$266.4	14.2%	\$899.5	\$888.9	1.2%	\$2,672.8	3,231.2	(17.3%)

Dollar amounts in millions, except daily wins-per-unit (WPU) and win-per-position (WPP).
* "Positions" is based on assumption of one per slot machine and average of six positions per table game.
The Atlantic City Gaming Revenue Analysis© is a copyright of the Spectrum Gaming Group and Management Science Associates. It may not be forwarded, retransmitted or reproduced without permission.

Spectrumetrix Atlantic City Gaming Revenue Analysis

AC Property Summary

OCTOBER 2020 Total GGR (\$M)	Month	Prior Year	Var. %		L3M	L3M PY	Var. %		L12M	L12M PY	Var. %	
Bally's	\$11.5	\$13.9	(17.1%)	↓	\$39.6	\$48.5	(18.3%)	↓	\$110.6	\$183.2	(39.7%)	↓
Borgata	\$67.7	\$61.3	10.4%	↑	\$196.7	\$207.6	(5.2%)	↓	\$577.7	\$788.5	(26.7%)	↓
Caesars	\$27.3	\$26.0	4.8%	↗	\$85.1	\$85.2	(0.1%)	↘	\$258.1	\$322.9	(20.1%)	↓
Golden Nugget	\$38.7	\$31.9	21.2%	↑	\$113.3	\$100.4	12.9%	↑	\$410.3	\$362.9	13.1%	↑
Hard Rock Atlantic City	\$35.5	\$28.2	25.6%	↑	\$110.8	\$101.0	9.7%	↑	\$277.1	\$343.8	(19.4%)	↓
Harrah's	\$19.5	\$24.2	(19.5%)	↓	\$60.5	\$82.1	(26.3%)	↓	\$192.6	\$310.5	(38.0%)	↓
Ocean Resort	\$29.2	\$21.3	37.0%	↑	\$85.4	\$71.3	19.8%	↑	\$211.4	\$222.8	(5.1%)	↓
Resorts	\$47.8	\$33.3	43.6%	↑	\$128.2	\$101.5	26.3%	↑	\$388.5	\$343.7	13.0%	↑
Tropicana	\$27.2	\$26.3	3.5%	↗	\$79.9	\$91.3	(12.6%)	↓	\$246.6	\$352.8	(30.1%)	↓
AC GGR Total	\$304.3	\$266.4	14.2%	↑	\$899.5	\$888.9	1.2%	↗	\$2,672.8	\$3,231.2	(17.3%)	↓
OCTOBER 2020 Slot Win (\$M)	Month	Prior Year	Var. %		L3M	L3M PY	Var. %		L12M	L12M PY	Var. %	
Bally's	\$7.6	\$9.1	(16.1%)	↓	\$28.4	\$33.4	(15.2%)	↓	\$77.9	\$125.5	(37.9%)	↓
Borgata	\$29.3	\$35.7	(17.9%)	↓	\$89.2	\$126.1	(29.2%)	↓	\$264.7	\$481.6	(45.0%)	↓
Caesars	\$12.7	\$14.7	(13.7%)	↓	\$40.8	\$51.0	(19.9%)	↓	\$115.6	\$184.8	(37.5%)	↓
Golden Nugget	\$8.9	\$11.4	(21.8%)	↓	\$25.3	\$38.4	(34.1%)	↓	\$83.3	\$149.1	(44.1%)	↓
Hard Rock Atlantic City	\$20.3	\$16.6	22.0%	↑	\$61.8	\$60.3	2.5%	↗	\$150.3	\$211.8	(29.0%)	↓
Harrah's	\$15.1	\$19.4	(22.0%)	↓	\$46.6	\$62.9	(25.9%)	↓	\$148.2	\$236.3	(37.3%)	↓
Ocean Resort	\$16.2	\$13.2	22.3%	↑	\$53.5	\$44.9	19.2%	↑	\$131.3	\$140.4	(6.5%)	↓
Resorts	\$7.9	\$9.9	(20.3%)	↓	\$28.9	\$36.0	(19.6%)	↓	\$82.8	\$135.9	(39.1%)	↓
Tropicana	\$14.9	\$17.5	(15.0%)	↓	\$46.5	\$62.0	(25.1%)	↓	\$140.6	\$244.7	(42.6%)	↓
AC Slot Win Total	\$132.9	\$147.5	(9.9%)	↓	\$421.0	\$515.0	(18.3%)	↓	\$1,194.7	\$1,910.0	(37.4%)	↓
OCTOBER 2020 Table Win (\$M) (excl. Poker)	Month	Prior Year	Var. %		L3M	L3M PY	Var. %		L12M	L12M PY	Var. %	
Bally's	\$3.4	\$3.8	(10.0%)	↓	\$10.9	\$12.4	(12.0%)	↓	\$29.6	\$50.5	(41.5%)	↓
Borgata	\$11.4	\$14.7	(22.7%)	↓	\$31.7	\$50.5	(37.2%)	↓	\$103.5	\$209.2	(50.5%)	↓
Caesars	\$6.4	\$7.1	(9.9%)	↓	\$18.5	\$21.1	(12.4%)	↓	\$55.6	\$83.5	(33.4%)	↓
Golden Nugget	\$1.6	\$3.3	(50.6%)	↓	\$5.9	\$12.9	(54.6%)	↓	\$25.8	\$50.4	(48.8%)	↓
Hard Rock Atlantic City	\$8.5	\$7.8	8.5%	↑	\$28.5	\$32.2	(11.6%)	↓	\$69.6	\$108.0	(35.6%)	↓
Harrah's	\$4.2	\$4.5	(7.9%)	↓	\$13.7	\$18.2	(24.7%)	↓	\$43.1	\$70.8	(39.1%)	↓
Ocean Resort	\$9.0	\$5.1	75.7%	↑	\$22.2	\$18.0	23.6%	↑	\$54.1	\$57.1	(5.1%)	↓
Resorts	\$3.5	\$2.3	56.0%	↑	\$10.0	\$9.7	3.0%	↗	\$26.9	\$44.9	(40.2%)	↓
Tropicana	\$4.8	\$4.4	9.3%	↑	\$13.0	\$16.7	(22.4%)	↓	\$38.0	\$60.4	(37.0%)	↓
AC Table Win Total	\$52.8	\$53.0	(0.4%)	↘	\$154.3	\$191.7	(19.5%)	↓	\$446.3	\$734.8	(39.3%)	↓

OCTOBER 2020 Slot Win-Unit-Day	Month	Prior Year	Var. %		L3M	L3M PY	Var. %		L12M	L12M PY	Var. %	
Bally's	\$140	\$164	(14.8%)	↓	\$175	\$203	(13.9%)	↓	\$170	\$193	(11.9%)	↓
Borgata	\$331	\$404	(17.9%)	↓	\$339	\$480	(29.3%)	↓	\$389	\$465	(16.4%)	↓
Caesars	\$220	\$250	(12.0%)	↓	\$239	\$293	(18.5%)	↓	\$238	\$267	(11.1%)	↓
Golden Nugget	\$213	\$255	(16.6%)	↓	\$201	\$291	(31.1%)	↓	\$230	\$282	(18.6%)	↓
Hard Rock Atlantic City	\$300	\$251	19.4%	↑	\$306	\$307	(0.5%)	↘	\$268	\$276	(3.0%)	↘
Harrah's	\$239	\$305	(21.5%)	↓	\$249	\$334	(25.4%)	↓	\$280	\$313	(10.5%)	↓
Ocean Resort	\$296	\$228	30.2%	↑	\$331	\$260	27.2%	↑	\$282	\$201	39.9%	↑
Resorts	\$183	\$221	(17.2%)	↓	\$222	\$272	(18.4%)	↓	\$224	\$261	(14.3%)	↓
Tropicana	\$204	\$243	(16.3%)	↓	\$214	\$290	(26.2%)	↓	\$231	\$286	(19.3%)	↓
AC Slot Win_Unit_Day Total	\$244	\$267	(8.6%)	↓	\$260	\$315	(17.4%)	↓	\$264	\$294	(10.1%)	↓
OCTOBER 2020 Table Win-Unit-Day	Month	Prior Year	Var. %		L3M	L3M PY	Var. %		L12M	L12M PY	Var. %	
Bally's	\$960	\$1,005	(4.5%)	↘	\$1,062	\$1,105	(3.9%)	↘	\$983	\$1,135	(13.4%)	↓
Borgata	\$1,942	\$2,537	(23.5%)	↓	\$1,822	\$2,950	(38.2%)	↓	\$2,305	\$3,105	(25.7%)	↓
Caesars	\$1,826	\$1,775	2.9%	↘	\$1,745	\$1,775	(1.7%)	↘	\$1,761	\$1,765	(0.2%)	↘
Golden Nugget	\$765	\$1,335	(42.7%)	↓	\$909	\$1,758	(48.3%)	↓	\$1,415	\$1,686	(16.1%)	↓
Hard Rock Atlantic City	\$1,784	\$1,783	0.1%	↘	\$2,046	\$2,409	(15.1%)	↓	\$1,784	\$1,987	(10.2%)	↓
Harrah's	\$1,080	\$1,093	(1.2%)	↘	\$1,200	\$1,486	(19.3%)	↓	\$1,294	\$1,459	(11.4%)	↓
Ocean Resort	\$2,762	\$1,435	92.4%	↑	\$2,215	\$1,698	30.4%	↑	\$1,858	\$1,375	35.1%	↑
Resorts	\$1,556	\$984	58.2%	↑	\$1,480	\$1,430	3.5%	↘	\$1,403	\$1,739	(19.3%)	↓
Tropicana	\$1,513	\$1,320	14.6%	↑	\$1,380	\$1,696	(18.6%)	↓	\$1,422	\$1,547	(8.1%)	↓
AC Table Win-Unit-Day Total	\$1,631	\$1,571	3.9%	↘	\$1,603	\$1,909	(16.0%)	↓	\$1,639	\$1,845	(11.1%)	↓
	Dollar amounts in millions, except for Win-Unit-Day sections. <i>The Atlantic City Gaming Revenue Analysis© is a copyright of the Spectrum Gaming Group and Management Science Associates. It may not be forwarded, retransmitted or reproduced without permission.</i>											

Spectrumetrix Atlantic City Gaming Revenue Analysis Month (Detail)

OCTOBER 2020	Bally's	Borgata	Caesars	Golden Nugget	Hard Rock Atlantic City	Harrah's	Ocean Resort	Resorts	Tropicana	Total
Table Drop	\$19,555	\$69,081	\$39,920	\$11,927	\$70,060	\$23,755	\$48,408	\$22,871	\$23,366	\$328,942
% change	(11.4%)	(16.9%)	8.0%	(41.3%)	39.7%	(6.7%)	41.9%	15.0%	(10.2%)	3.4%
Win (excl. Poker)	\$3,421	\$11,375	\$6,396	\$1,637	\$8,519	\$4,153	\$8,989	\$3,522	\$4,783	\$52,796
% change	(10.0%)	(22.7%)	(9.9%)	(50.6%)	8.5%	(7.9%)	75.7%	56.0%	9.3%	(0.4%)
Hold Percentage	17.5%	16.5%	16.0%	13.7%	12.2%	17.5%	18.6%	15.4%	20.5%	16.1%
pct. point change	0.3%	(1.2%)	(3.2%)	(2.6%)	(3.5%)	(0.2%)	3.6%	4.0%	3.6%	(0.6%)
Normalized Win(@ 15.6%)	\$3,051	\$10,777	\$6,227	\$1,861	\$10,929	\$3,706	\$7,552	\$3,568	\$3,645	\$51,315
% change	(11.4%)	(16.9%)	8.0%	(41.3%)	39.7%	(6.7%)	41.9%	15.0%	(10.2%)	3.4%
No. table (ex. poker)	115	189	113	69	154	124	105	73	102	1,044
Win/tbl/day(ex. poker)	\$960	\$1,942	\$1,826	\$765	\$1,784	\$1,080	\$2,762	\$1,556	\$1,513	\$1,630
% change	(4.5%)	(23.5%)	2.9%	(42.7%)	0.1%	(1.2%)	92.4%	58.2%	14.6%	3.9%
Share # tbls (ex. poker)	11.0%	18.1%	10.8%	6.6%	14.8%	11.9%	10.1%	7.0%	9.8%	100.0%
Share tbl win (ex. poker)	6.5%	21.5%	12.1%	3.1%	16.1%	7.9%	17.0%	6.7%	9.1%	100.0%
Fair Share +/- bps	(454)	344	129	(351)	138	(401)	697	(32)	(71)	
Poker Win		\$461								\$461
% change		(56.5%)								(73.6%)
Poker win/table/day		\$219								\$113
% change		(50.8%)								(61.8%)
Total Table Win (incl. Poker/Keno)	\$3,421	\$11,836	\$6,396	\$1,637	\$8,519	\$4,153	\$8,989	\$3,522	\$4,783	\$53,257
% change	(14.1%)	(24.9%)	(9.9%)	(51.8%)	8.5%	(11.9%)	73.5%	56.0%	5.6%	(2.8%)
Slots Handle	\$82,567	\$332,295	\$138,573	\$89,141	\$211,591	\$183,045	\$160,129	\$87,110	\$155,186	\$1,439,637
% change	(19.6%)	(18.7%)	(11.6%)	(29.9%)	13.9%	(19.3%)	21.5%	(17.6%)	(15.8%)	(11.7%)
Slot Win	\$7,643	\$29,348	\$12,672	\$8,876	\$20,283	\$15,103	\$16,195	\$7,862	\$14,872	\$132,854
% change	(16.1%)	(17.9%)	(13.7%)	(21.8%)	22.0%	(22.0%)	22.3%	(20.3%)	(15.0%)	(9.9%)
Hold Percentage	9.3%	8.8%	9.1%	10.0%	9.6%	8.3%	10.1%	9.0%	9.6%	9.2%
pct. point change	0.4%	0.1%	(0.2%)	1.0%	0.6%	(0.3%)	0.1%	(0.3%)	0.1%	0.2%
No. Slots	1,761	2,856	1,855	1,345	2,181	2,036	1,762	1,385	2,357	17,538
Win/slot/day	\$140	\$331	\$220	\$213	\$300	\$239	\$296	\$183	\$204	\$244
% change	(14.8%)	(17.9%)	(12.0%)	(16.6%)	19.4%	(21.5%)	30.2%	(17.2%)	(16.3%)	(8.6%)
Daily WPU Perf Index	0.57	1.36	0.90	0.87	1.23	0.98	1.22	0.75	0.83	
Share # slots	10.0%	16.3%	10.6%	7.7%	12.4%	11.6%	10.0%	7.9%	13.4%	100.0%
Share of slot win	5.8%	22.1%	9.5%	6.7%	15.3%	11.4%	12.2%	5.9%	11.2%	100.0%
Fair Share +/- bps	(429)	581	(104)	(99)	283	(24)	214	(198)	(225)	
Promotional Credits	\$1,488	\$5,036	\$3,010	\$1,683	\$4,417	\$3,134	\$4,807	\$1,517	\$2,587	\$27,677
% change	(12.2%)	(14.4%)	36.3%	(38.4%)	11.1%	20.4%	52.7%	(24.4%)	(18.9%)	0.9%
Win/Slot Promo Credit	\$5.14	\$5.83	\$4.21	\$5.27	\$4.59	\$4.82	\$3.37	\$5.18	\$5.75	\$4.80

State Benchmark	1.07	1.21	0.88	1.10	0.96	1.00	0.70	1.08	1.20	
Potential Gain (Win)			\$1,775		\$917		\$6,878			
Savings (Promo Credits)	\$105	\$1,079		\$166		\$12		\$121	\$512	
Slot+Table (ex. Poker) Win	\$11,064	\$40,724	\$19,067	\$10,513	\$28,802	\$19,256	\$25,184	\$11,384	\$19,655	\$185,650
No. positions	2,451	3,990	2,533	1,759	3,105	2,780	2,392	1,823	2,969	23,802
Win/position/day	\$146	\$329	\$243	\$193	\$299	\$223	\$340	\$201	\$214	\$252
% change	(11.9%)	(19.5%)	(7.9%)	(22.0%)	13.2%	(17.4%)	47.1%	(3.0%)	(10.3%)	(5.4%)
Share # positions	10.3%	16.8%	10.6%	7.4%	13.0%	11.7%	10.0%	7.7%	12.5%	100.0%
Share of Win	6.0%	21.9%	10.3%	5.7%	15.5%	10.4%	13.6%	6.1%	10.6%	100.0%
Fair Share +/- bps	(434)	517	(37)	(173)	247	(131)	352	(153)	(189)	
SportsBook Win	\$423	\$4,254		\$39	\$1,218	\$210	\$3,321	\$14,763	\$334	\$24,561
% change	(45.1%)	130.4%		(92.7%)	(38.0%)	127.4%	42.3%	36.4%	(14.3%)	30.9%
Simulcast Win		\$144								\$144
% change		(13.8%)								(13.8%)
Internet Win		\$22,079	\$8,233	\$28,127	\$5,461		\$678	\$21,628	\$7,246	\$93,452
% change		184.6%	93.3%	69.2%	201.5%		24.9%	109.3%	86.6%	106.7%
Total Win	\$11,487	\$67,662	\$27,300	\$38,679	\$35,481	\$19,466	\$29,183	\$47,775	\$27,235	\$304,268
% change	(17.1%)	10.4%	4.8%	21.2%	25.6%	(19.5%)	37.0%	43.6%	3.5%	14.2%
Total Win Per Square Ft. Gaming Space	\$90	\$422	\$236	\$493	\$289	\$125	\$221	\$605	\$223	\$278
% change	(17.1%)	10.4%	4.8%	21.2%	25.6%	(19.5%)	37.0%	43.6%	3.5%	14.2%

Dollar amounts in thousands, except daily wins-per-unit and square feet.

The Atlantic City Gaming Revenue Analysis© is a copyright of the Spectrum Gaming Group and Management Science Associates. It may not be forwarded, retransmitted or reproduced without permission.



Spectrumetrix Atlantic City Gaming Revenue Analysis
Month (Detail) - Consolidated By Operator

OCTOBER 2020	AC Ocean Walk	Caesars Entertainment	DGMB Casino, LLC.	Hard Rock International	Landry's Inc.	MGM Resorts	Tropicana Entertainment	Total
Table Drop	\$48,408	\$83,229	\$22,871	\$70,060	\$11,927	\$69,081	\$23,366	\$328,942
% change	41.9%	(1.5%)	15.0%	39.7%	(41.3%)	(16.9%)	(10.2%)	3.4%
Win (excl. Poker)	\$8,989	\$13,970	\$3,522	\$8,519	\$1,637	\$11,375	\$4,783	\$52,796
% change	75.7%	(9.3%)	56.0%	8.5%	(50.6%)	(22.7%)	9.3%	(0.4%)
Hold Percentage	18.6%	16.8%	15.4%	12.2%	13.7%	16.5%	20.5%	16.1%
pct. point change	3.6%	(1.4%)	4.0%	(3.5%)	(2.6%)	(1.2%)	3.6%	2.5%
Normalized Win(@ 15.6%)	\$7,552	\$12,984	\$3,568	\$10,929	\$1,861	\$10,777	\$3,645	\$51,315
% change	41.9%	(1.5%)	15.0%	39.7%	(41.3%)	(16.9%)	(10.2%)	3.4%
No. table (ex. poker)	105	352	73	154	69	189	102	1,044
Win/tbl/day(ex. poker)	\$2,761	\$1,279	\$1,555	\$1,783	\$764	\$1,941	\$1,512	\$1,630
% change	92.4%	(1.1%)	58.2%	0.1%	(42.7%)	(23.5%)	14.6%	3.9%
Share # tbls (ex. poker)	10.1%	33.7%	7.0%	14.8%	6.6%	18.1%	9.8%	100.0%
Share tbl win (ex. poker)	17.0%	26.5%	6.7%	16.1%	3.1%	21.5%	9.1%	100.0%
Fair Share +/- bps	697	(726)	(32)	138	(351)	344	(71)	
Poker Win						\$461		\$461
% change						(56.5%)		(73.6%)
Poker win/table/day						\$219		\$113
% change						(50.8%)		(61.8%)
Total Table Win (incl. Poker/Keno)	\$8,989	\$13,970	\$3,522	\$8,519	\$1,637	\$11,836	\$4,783	\$53,257
% change	73.5%	(11.5%)	56.0%	8.5%	(51.8%)	(24.9%)	5.6%	(2.8%)
Slots Handle	\$160,129	\$404,185	\$87,110	\$211,591	\$89,141	\$332,295	\$155,186	\$1,439,637
% change	21.5%	(16.9%)	(17.6%)	13.9%	(29.9%)	(18.7%)	(15.8%)	(11.7%)
Slot Win	\$16,195	\$35,418	\$7,862	\$20,283	\$8,876	\$29,348	\$14,872	\$132,854
% change	22.3%	(18.0%)	(20.3%)	22.0%	(21.8%)	(17.9%)	(15.0%)	(9.9%)
Hold Percentage	10.1%	8.8%	9.0%	9.6%	10.0%	8.8%	9.6%	9.2%
pct. point change	0.1%	(0.1%)	(0.3%)	0.6%	1.0%	0.1%	0.1%	0.2%
No. Slots	1,762	5,652	1,385	2,181	1,345	2,856	2,357	17,538
Win/slot/day	\$296	\$202	\$183	\$300	\$213	\$331	\$204	\$244
% change	30.2%	(16.9%)	(17.2%)	19.4%	(16.6%)	(17.9%)	(16.3%)	(8.6%)
Daily WPU Perf Index	1.22	0.83	0.75	1.23	0.87	1.36	0.83	
Share # slots	10.0%	32.2%	7.9%	12.4%	7.7%	16.3%	13.4%	100.0%
Share of slot win	12.2%	26.7%	5.9%	15.3%	6.7%	22.1%	11.2%	100.0%
Fair Share +/- bps	214	(557)	(198)	283	(99)	581	(225)	
Promotional Credits	\$4,807	\$7,632	\$1,517	\$4,417	\$1,683	\$5,036	\$2,587	\$27,677
% change	52.7%	17.3%	(24.4%)	11.1%	(38.4%)	(14.4%)	(18.9%)	0.9%
Win/Slot Promo Credit	\$3.37	\$4.64	\$5.18	\$4.59	\$5.27	\$5.83	\$5.75	\$4.80

State Benchmark	0.70	0.97	1.08	0.96	1.10	1.21	1.20	
Potential Gain (Win)	\$6,878	\$1,215		\$917				
Savings (Promo Credits)			\$121		\$166	\$1,079	\$512	
Slot+Table (ex. Poker) Win	\$25,184	\$49,387	\$11,384	\$28,802	\$10,513	\$40,724	\$19,655	\$185,650
No. positions	2,392	7,764	1,823	3,105	1,759	3,990	2,969	23,802
Win/position/day	\$340	\$205	\$201	\$299	\$193	\$329	\$214	\$252
% change	47.1%	(12.8%)	(3.0%)	13.2%	(22.0%)	(19.5%)	(10.3%)	(5.4%)
Share # positions	10.0%	32.6%	7.7%	13.0%	7.4%	16.8%	12.5%	100.0%
Share of Win	13.6%	26.6%	6.1%	15.5%	5.7%	21.9%	10.6%	100.0%
Fair Share +/- bps	352	(602)	(153)	247	(173)	517	(189)	
SportsBook Win	\$3,321	\$633	\$14,763	\$1,218	\$39	\$4,254	\$334	\$24,561
% change	42.3%	(26.6%)	36.4%	(38.0%)	(92.7%)	130.4%	(14.3%)	30.9%
Simulcast Win						\$144		\$144
% change						(13.8%)		(13.8%)
Internet Win	\$678	\$8,233	\$21,628	\$5,461	\$28,127	\$22,079	\$7,246	\$93,452
% change	24.9%	93.3%	109.3%	201.5%	69.2%	184.6%	86.6%	106.7%
Total Win	\$29,183	\$58,253	\$47,775	\$35,481	\$38,679	\$67,662	\$27,235	\$304,268
% change	37.0%	(9.1%)	43.6%	25.6%	21.2%	10.4%	3.5%	14.2%
Total Win Per Square Ft. Gaming Space	\$221	\$146	\$605	\$289	\$493	\$422	\$223	\$278
% change	37.0%	(9.1%)	43.6%	25.6%	21.2%	10.4%	3.5%	14.2%

Dollar amounts in thousands, except daily wins-per-unit and square feet.

The Atlantic City Gaming Revenue Analysis© is a copyright of the Spectrum Gaming Group and Management Science Associates. It may not be forwarded, retransmitted or reproduced without permission.



Spectrumetrix Atlantic City Gaming Revenue Analysis
Last 3 Months (Detail)

L3M: OCTOBER 2020	Bally's	Borgata	Caesars	Golden Nugget	Hard Rock Atlantic City	Harrah's	Ocean Resort	Resorts	Tropicana	Total
Table Drop	\$66,231	\$189,453	\$113,591	\$38,417	\$210,862	\$76,428	\$146,647	\$76,093	\$66,439	\$984,160
% change	(12.2%)	(38.4%)	(15.2%)	(44.2%)	14.3%	(15.8%)	18.6%	8.3%	(26.5%)	(14.1%)
Win (excl. Poker)	\$10,910	\$31,688	\$18,456	\$5,880	\$28,478	\$13,691	\$22,210	\$10,028	\$12,952	\$154,293
% change	(12.0%)	(37.2%)	(12.4%)	(54.6%)	(11.6%)	(24.7%)	23.6%	3.0%	(22.4%)	(19.5%)
Hold Percentage	16.5%	16.7%	16.2%	15.3%	13.5%	17.9%	15.1%	13.2%	19.5%	15.7%
pct. point change	0.0%	0.3%	0.5%	(3.5%)	(4.0%)	(2.1%)	0.6%	(0.7%)	1.0%	(7.7%)
Normalized Win(@ 15.6%)	\$10,332	\$29,555	\$17,720	\$5,993	\$32,894	\$11,923	\$22,877	\$11,870	\$10,364	\$153,529
% change	(12.2%)	(38.4%)	(15.2%)	(44.2%)	14.3%	(15.8%)	18.6%	8.3%	(26.5%)	(14.1%)
No. table (ex. poker)	112	189	115	70	151	124	109	74	102	1,046
Win/tbl/day(ex. poker)	\$1,062	\$1,822	\$1,745	\$909	\$2,046	\$1,200	\$2,215	\$1,480	\$1,380	\$1,602
% change	(3.9%)	(38.2%)	(1.7%)	(48.3%)	(15.1%)	(19.3%)	30.4%	3.5%	(18.6%)	(16.0%)
Share # tbls (ex. poker)	10.7%	18.1%	11.0%	6.7%	14.5%	11.9%	10.4%	7.0%	9.8%	100.0%
Share tbl win (ex. poker)	7.1%	20.5%	12.0%	3.8%	18.5%	8.9%	14.4%	6.5%	8.4%	100.0%
Fair Share +/- bps	(361)	247	97	(291)	399	(298)	397	(54)	(136)	
Poker Win		\$461								\$461
% change		(89.3%)								(93.0%)
Poker win/table/day		\$70								\$37
% change		(86.3%)								(89.4%)
Total Table Win (incl. Poker/Keno)	\$10,910	\$32,149	\$18,456	\$5,880	\$28,478	\$13,691	\$22,210	\$10,028	\$12,952	\$154,754
% change	(15.9%)	(41.3%)	(12.4%)	(55.4%)	(11.6%)	(27.3%)	21.8%	3.0%	(24.7%)	(21.9%)
Slots Handle	\$293,558	\$1,009,271	\$430,683	\$261,911	\$640,147	\$547,219	\$496,261	\$304,866	\$484,230	\$4,468,146
% change	(17.6%)	(31.0%)	(20.4%)	(36.9%)	(1.8%)	(26.5%)	9.8%	(20.4%)	(25.6%)	(21.0%)
Slot Win	\$28,358	\$89,200	\$40,798	\$25,331	\$61,781	\$46,585	\$53,543	\$28,927	\$46,458	\$420,982
% change	(15.2%)	(29.2%)	(19.9%)	(34.1%)	2.5%	(25.9%)	19.2%	(19.6%)	(25.1%)	(18.3%)
Hold Percentage	9.7%	8.8%	9.5%	9.7%	9.7%	8.5%	10.8%	9.5%	9.6%	9.4%
pct. point change	0.3%	0.2%	0.1%	0.4%	0.4%	0.1%	0.9%	0.1%	0.1%	0.3%
No. Slots	1,760	2,856	1,859	1,371	2,195	2,036	1,758	1,417	2,356	17,608
Win/slot/day	\$175	\$339	\$239	\$201	\$306	\$249	\$331	\$222	\$214	\$260
% change	(13.9%)	(29.3%)	(18.5%)	(31.1%)	(0.5%)	(25.4%)	27.2%	(18.4%)	(26.2%)	(17.4%)
Daily WPU Perf Index	0.67	1.31	0.92	0.77	1.18	0.96	1.27	0.85	0.82	
Share # slots	10.0%	16.2%	10.6%	7.8%	12.5%	11.6%	10.0%	8.0%	13.4%	100.0%
Share of slot win	6.7%	21.2%	9.7%	6.0%	14.7%	11.1%	12.7%	6.9%	11.0%	100.0%
Fair Share +/- bps	(326)	497	(87)	(177)	221	(50)	273	(118)	(235)	
Promotional Credits	\$5,148	\$15,605	\$9,313	\$5,338	\$12,542	\$9,787	\$15,548	\$4,998	\$7,782	\$86,061
% change	1.3%	(31.4%)	27.9%	(40.0%)	(16.0%)	13.6%	37.4%	(32.4%)	(29.9%)	(11.6%)
Win/Slot Promo Credit	\$5.51	\$5.72	\$4.38	\$4.75	\$4.93	\$4.76	\$3.44	\$5.79	\$5.97	\$4.89

State Benchmark	1.13	1.17	0.90	0.97	1.01	0.97	0.70	1.18	1.22	
Potential Gain (Win)			\$4,743	\$772		\$1,274	\$22,484			
Savings (Promo Credits)	\$651	\$2,637			\$92			\$917	\$1,718	
Slot+Table (ex. Poker) Win	\$39,268	\$120,889	\$59,254	\$31,211	\$90,259	\$60,277	\$75,753	\$38,955	\$59,409	\$575,275
No. positions	2,430	3,990	2,549	1,793	3,103	2,780	2,412	1,859	2,968	23,884
Win/position/day	\$176	\$329	\$253	\$189	\$316	\$236	\$341	\$228	\$218	\$262
% change	(11.2%)	(31.9%)	(14.0%)	(35.2%)	(5.5%)	(23.9%)	28.2%	(13.7%)	(24.6%)	(17.1%)
Share # positions	10.2%	16.7%	10.7%	7.5%	13.0%	11.6%	10.1%	7.8%	12.4%	100.0%
Share of Win	6.8%	21.0%	10.3%	5.4%	15.7%	10.5%	13.2%	6.8%	10.3%	100.0%
Fair Share +/- bps	(335)	431	(37)	(208)	270	(116)	307	(101)	(210)	
SportsBook Win	\$373	\$12,829		\$289	\$2,847	\$210	\$7,473	\$29,732	\$752	\$54,506
% change	(82.4%)	201.5%		(80.3%)	6.9%	(42.5%)	11.4%	2.1%	(17.8%)	14.5%
Simulcast Win		\$420								\$420
% change		(29.0%)								(29.0%)
Internet Win		\$62,138	\$25,844	\$81,782	\$17,674		\$2,186	\$59,528	\$19,706	\$268,858
% change		184.4%	96.2%	73.1%	203.4%		52.7%	122.9%	75.8%	110.9%
Total Win	\$39,641	\$196,737	\$85,098	\$113,282	\$110,780	\$60,487	\$85,413	\$128,215	\$79,868	\$899,521
% change	(18.3%)	(5.2%)	(0.1%)	12.9%	9.7%	(26.3%)	19.8%	26.3%	(12.6%)	1.2%
Total Win Per Square Ft. Gaming Space	\$312	\$1,227	\$734	\$1,444	\$902	\$387	\$646	\$1,623	\$655	\$822
% change	(18.3%)	(5.2%)	(0.1%)	12.9%	9.7%	(26.3%)	19.8%	26.3%	(12.6%)	1.2%

Dollar amounts in thousands, except daily wins-per-unit and square feet.

The Atlantic City Gaming Revenue Analysis© is a copyright of the Spectrum Gaming Group and Management Science Associates. It may not be forwarded, retransmitted or reproduced without permission.



Spectrumetrix Atlantic City Gaming Revenue Analysis
Last 3 Months (Detail) - Consolidated By Operator

L3M: OCTOBER 2020	AC Ocean Walk	Caesars Entertainment	DGMB Casino, LLC.	Hard Rock International	Landry's Inc.	MGM Resorts	Tropicana Entertainment	Total
Table Drop	\$146,647	\$256,250	\$76,093	\$210,862	\$38,417	\$189,453	\$66,439	\$984,160
% change	18.6%	(14.7%)	8.3%	14.3%	(44.2%)	(38.4%)	(26.5%)	(14.1%)
Win (excl. Poker)	\$22,210	\$43,057	\$10,028	\$28,478	\$5,880	\$31,688	\$12,952	\$154,293
% change	23.6%	(16.6%)	3.0%	(11.6%)	(54.6%)	(37.2%)	(22.4%)	(19.5%)
Hold Percentage	15.1%	16.8%	13.2%	13.5%	15.3%	16.7%	19.5%	15.7%
pct. point change	0.6%	(0.4%)	(0.7%)	(4.0%)	(3.5%)	0.3%	1.0%	(6.6%)
Normalized Win(@ 15.6%)	\$22,877	\$39,975	\$11,870	\$32,894	\$5,993	\$29,555	\$10,364	\$153,529
% change	18.6%	(14.7%)	8.3%	14.3%	(44.2%)	(38.4%)	(26.5%)	(14.1%)
No. table (ex. poker)	109	351	74	151	70	189	102	1,046
Win/tbl/day(ex. poker)	\$2,214	\$1,334	\$1,479	\$2,045	\$908	\$1,821	\$1,379	\$1,602
% change	30.4%	(8.7%)	3.5%	(15.1%)	(48.3%)	(38.2%)	(18.6%)	(16.0%)
Share # tbls (ex. poker)	10.4%	33.5%	7.0%	14.5%	6.7%	18.1%	9.8%	100.0%
Share tbl win (ex. poker)	14.4%	27.9%	6.5%	18.5%	3.8%	20.5%	8.4%	100.0%
Fair Share +/- bps	397	(562)	(54)	399	(291)	247	(136)	
Poker Win						\$461		\$461
% change	(100.0%)	(100.0%)			(100.0%)	(89.3%)	(100.0%)	(93.0%)
Poker win/table/day						\$70		\$37
% change						(86.3%)		(89.4%)
Total Table Win (incl. Poker/Keno)	\$22,210	\$43,057	\$10,028	\$28,478	\$5,880	\$32,149	\$12,952	\$154,754
% change	21.8%	(18.6%)	3.0%	(11.6%)	(55.4%)	(41.3%)	(24.7%)	(21.9%)
Slots Handle	\$496,261	\$1,271,460	\$304,866	\$640,147	\$261,911	\$1,009,271	\$484,230	\$4,468,146
% change	9.8%	(22.6%)	(20.4%)	(1.8%)	(36.9%)	(31.0%)	(25.6%)	(21.0%)
Slot Win	\$53,543	\$115,742	\$28,927	\$61,781	\$25,331	\$89,200	\$46,458	\$420,982
% change	19.2%	(21.4%)	(19.6%)	2.5%	(34.1%)	(29.2%)	(25.1%)	(18.3%)
Hold Percentage	10.8%	9.1%	9.5%	9.7%	9.7%	8.8%	9.6%	9.4%
pct. point change	0.9%	0.1%	0.1%	0.4%	0.4%	0.2%	0.1%	0.3%
No. Slots	1,758	5,655	1,417	2,195	1,371	2,856	2,356	17,608
Win/slot/day	\$331	\$222	\$222	\$306	\$201	\$339	\$214	\$260
% change	27.2%	(20.4%)	(18.4%)	(0.5%)	(31.1%)	(29.3%)	(26.2%)	(17.4%)
Daily WPU Perf Index	1.27	0.86	0.85	1.18	0.77	1.31	0.82	
Share # slots	10.0%	32.1%	8.0%	12.5%	7.8%	16.2%	13.4%	100.0%
Share of slot win	12.7%	27.5%	6.9%	14.7%	6.0%	21.2%	11.0%	100.0%
Fair Share +/- bps	273	(462)	(118)	221	(177)	497	(235)	
Promotional Credits	\$15,548	\$24,249	\$4,998	\$12,542	\$5,338	\$15,605	\$7,782	\$86,061
% change	37.4%	15.6%	(32.4%)	(16.0%)	(40.0%)	(31.4%)	(29.9%)	(11.6%)
Win/Slot Promo Credit	\$3.44	\$4.77	\$5.79	\$4.93	\$4.75	\$5.72	\$5.97	\$4.89

State Benchmark	0.70	0.98	1.18	1.01	0.97	1.17	1.22	
Potential Gain (Win)	\$22,484	\$2,833			\$772			
Savings (Promo Credits)			\$917	\$92		\$2,637	\$1,718	
Slot+Table (ex. Poker) Win	\$75,753	\$158,799	\$38,955	\$90,259	\$31,211	\$120,889	\$59,409	\$575,275
No. positions	2,412	7,759	1,859	3,103	1,793	3,990	2,968	23,884
Win/position/day	\$341	\$222	\$228	\$316	\$189	\$329	\$218	\$262
% change	28.2%	(17.4%)	(13.7%)	(5.5%)	(35.2%)	(31.9%)	(24.6%)	(17.1%)
Share # positions	10.1%	32.5%	7.8%	13.0%	7.5%	16.7%	12.4%	100.0%
Share of Win	13.2%	27.6%	6.8%	15.7%	5.4%	21.0%	10.3%	100.0%
Fair Share +/- bps	307	(488)	(101)	270	(208)	431	(210)	
SportsBook Win	\$7,473	\$584	\$29,732	\$2,847	\$289	\$12,829	\$752	\$54,506
% change	11.4%	(76.5%)	2.1%	6.9%	(80.3%)	201.5%	(17.8%)	(29.0%)
Simulcast Win						\$420		\$420
% change						(29.0%)		(29.0%)
Internet Win	\$2,186	\$25,844	\$59,528	\$17,674	\$81,782	\$62,138	\$19,706	\$268,858
% change	152.7%	196.2%	222.9%	303.4%	173.1%	284.4%	175.8%	110.9%
Total Win	\$85,413	\$185,226	\$128,215	\$110,780	\$113,282	\$196,737	\$79,868	\$899,521
% change	19.8%	(14.2%)	26.3%	9.7%	12.9%	(5.2%)	(12.6%)	1.2%
Total Win Per Square Ft. Gaming Space	\$646	\$464	\$1,623	\$902	\$1,444	\$1,227	\$655	\$822
% change	19.8%	(14.2%)	26.3%	9.7%	12.9%	(5.2%)	(12.6%)	1.2%

Dollar amounts in thousands, except daily wins-per-unit and square feet.

The Atlantic City Gaming Revenue Analysis© is a copyright of the Gaming Industry Observer and Spectrum Gaming Group and Management Science Associates. It may not be forwarded, retransmitted or reproduced without permission.



Spectrumetrix Atlantic City Gaming Revenue Analysis
Last 12 Months (Detail)

L12M: OCTOBER 2020	Bally's	Borgata	Caesars	Golden Nugget	Hard Rock Atlantic City	Harrah's	Ocean Resort	Resorts	Tropicana	Total
Table Drop	\$194,217	\$617,740	\$345,610	\$139,649	\$518,761	\$229,120	\$359,919	\$201,274	\$215,877	\$2,822,167
% change	(36.5%)	(47.9%)	(32.3%)	(49.5%)	(27.6%)	(36.6%)	(23.2%)	(28.8%)	(37.7%)	(36.6%)
Win (excl. Poker)	\$29,571	\$103,496	\$55,628	\$25,824	\$69,598	\$43,141	\$54,138	\$26,854	\$38,043	\$446,292
% change	(41.5%)	(50.5%)	(33.4%)	(48.8%)	(35.6%)	(39.1%)	(5.1%)	(40.2%)	(37.0%)	(39.3%)
Hold Percentage	15.2%	16.8%	16.1%	18.5%	13.4%	18.8%	15.0%	13.3%	17.6%	15.8%
pct. point change	(1.3%)	(0.9%)	(0.3%)	0.3%	(1.7%)	(0.8%)	2.9%	(2.5%)	0.2%	(4.1%)
Normalized Win(@ 15.6%)	\$30,298	\$96,367	\$53,915	\$21,785	\$80,927	\$35,743	\$56,147	\$31,399	\$33,677	\$440,258
% change	(36.5%)	(47.9%)	(32.3%)	(49.5%)	(27.6%)	(36.6%)	(23.2%)	(28.8%)	(37.7%)	(36.6%)
No. table (ex. poker)	116	189	122	70	151	129	113	74	103	1,066
Win/tbl/day(ex. poker)	\$983	\$2,305	\$1,761	\$1,415	\$1,784	\$1,294	\$1,858	\$1,403	\$1,422	\$1,638
% change	(13.4%)	(25.7%)	(0.2%)	(16.1%)	(10.2%)	(11.4%)	35.1%	(19.3%)	(8.1%)	(11.1%)
Share # tbls (ex. poker)	10.9%	17.7%	11.4%	6.6%	14.1%	12.1%	10.6%	6.9%	9.7%	100.0%
Share tbl win (ex. poker)	6.6%	23.2%	12.5%	5.8%	15.6%	9.7%	12.1%	6.0%	8.5%	100.0%
Fair Share +/- bps	(427)	550	102	(82)	147	(241)	158	(91)	(117)	
Poker Win	\$775	\$7,122		\$409		\$1,067	\$239		\$715	\$10,327
% change	(65.5%)	(60.5%)		(60.4%)		(59.6%)	(83.9%)		(65.1%)	(62.5%)
Poker win/table/day	\$135	\$366		\$176		\$107	\$325		\$153	\$240
% change	(8.2%)	(33.0%)		(44.2%)		(45.2%)	(36.1%)		(50.9%)	(35.0%)
Total Table Win (incl. Poker/Keno)	\$30,345	\$110,618	\$55,628	\$26,233	\$69,598	\$44,208	\$54,377	\$26,854	\$38,759	\$456,619
% change	(42.5%)	(51.3%)	(33.4%)	(49.0%)	(35.6%)	(39.8%)	(7.1%)	(40.2%)	(37.9%)	(40.1%)
Slots Handle	\$827,839	\$3,017,376	\$1,255,458	\$876,373	\$1,578,003	\$1,769,897	\$1,263,034	\$890,539	\$1,479,638	\$12,958,156
% change	(38.8%)	(47.0%)	(38.1%)	(44.9%)	(30.2%)	(38.1%)	(13.6%)	(39.1%)	(41.5%)	(39.0%)
Slot Win	\$77,874	\$264,694	\$115,563	\$83,323	\$150,323	\$148,207	\$131,280	\$82,830	\$140,606	\$1,194,701
% change	(37.9%)	(45.0%)	(37.5%)	(44.1%)	(29.0%)	(37.3%)	(6.5%)	(39.1%)	(42.6%)	(37.4%)
Hold Percentage	9.4%	8.8%	9.2%	9.5%	9.5%	8.4%	10.4%	9.3%	9.5%	9.2%
pct. point change	0.1%	0.3%	0.1%	0.1%	0.2%	0.1%	0.8%	0.0%	(0.2%)	1.6%
No. Slots	1,766	2,859	1,878	1,400	2,166	2,042	1,800	1,430	2,351	17,692
Win/slot/day	\$170	\$389	\$238	\$230	\$268	\$280	\$282	\$224	\$231	\$264
% change	(11.9%)	(16.4%)	(11.1%)	(18.6%)	(3.0%)	(10.5%)	39.9%	(14.3%)	(19.3%)	(10.1%)
Daily WPU Perf Index	0.65	1.47	0.90	0.87	1.02	1.06	1.07	0.85	0.87	
Share # slots	10.0%	16.2%	10.6%	7.9%	12.2%	11.5%	10.2%	8.1%	13.3%	100.0%
Share of slot win	6.5%	22.2%	9.7%	7.0%	12.6%	12.4%	11.0%	6.9%	11.8%	100.0%
Fair Share +/- bps	(346)	599	(94)	(94)	34	86	81	(115)	(152)	
Promotional Credits	\$13,458	\$45,213	\$22,205	\$17,749	\$28,699	\$25,934	\$33,306	\$16,751	\$24,244	\$227,558
% change	(31.3%)	(44.5%)	(20.0%)	(45.7%)	(38.7%)	(20.5%)	(7.2%)	(39.7%)	(44.8%)	(34.7%)
Win/Slot Promo Credit	\$5.79	\$5.85	\$5.20	\$4.69	\$5.24	\$5.71	\$3.94	\$4.94	\$5.80	\$5.25

State Benchmark	1.10	1.12	0.99	0.89	1.00	1.09	0.75	0.94	1.10	
Potential Gain (Win)			\$1,011	\$9,859	\$349		\$43,575	\$5,110		
Savings (Promo Credits)	\$1,376	\$5,205				\$2,296			\$2,538	
Slot+Table (ex. Poker) Win	\$107,445	\$368,190	\$171,191	\$109,147	\$219,921	\$191,348	\$185,418	\$109,684	\$178,650	\$1,640,993
No. positions	2,463	3,991	2,610	1,823	3,069	2,815	2,475	1,874	2,971	24,090
Win/position/day	\$168	\$388	\$253	\$231	\$277	\$262	\$289	\$226	\$232	\$267
% change	(12.3%)	(19.2%)	(8.0%)	(18.0%)	(5.5%)	(10.6%)	38.6%	(15.5%)	(17.1%)	(10.4%)
Share # positions	10.2%	16.6%	10.8%	7.6%	12.7%	11.7%	10.3%	7.8%	12.3%	100.0%
Share of Win	6.5%	22.4%	10.4%	6.7%	13.4%	11.7%	11.3%	6.7%	10.9%	100.0%
Fair Share +/- bps	(368)	587	(40)	(92)	66	(2)	102	(109)	(145)	
SportsBook Win	\$2,339	\$26,178		\$1,160	\$5,206	\$141	\$16,838	\$89,399	\$1,520	\$142,780
% change	(52.6%)	254.3%		(47.8%)	59.2%	(81.9%)	(7.4%)	14.9%	(22.1%)	22.5%
Simulcast Win		\$1,153								\$1,153
% change		(47.8%)								(47.8%)
Internet Win		\$175,056	\$86,902	\$299,625	\$51,960		\$8,892	\$189,367	\$65,724	\$877,526
% change		149.5%	59.1%	87.1%	150.0%		56.6%	122.5%	50.6%	99.4%
Total Win	\$110,559	\$577,699	\$258,092	\$410,342	\$277,087	\$192,555	\$211,387	\$388,450	\$246,608	\$2,672,780
% change	(39.7%)	(26.7%)	(20.1%)	13.1%	(19.4%)	(38.0%)	(5.1%)	13.0%	(30.1%)	(17.3%)
Total Win Per Square Ft. Gaming Space	\$1,158	\$4,744	\$2,969	\$6,973	\$3,009	\$1,643	\$2,132	\$6,555	\$2,697	\$3,251
% change	(19.5%)	(2.6%)	6.6%	50.7%	6.4%	(17.3%)	26.3%	50.7%	(5.7%)	10.3%

Dollar amounts in thousands, except daily wins-per-unit and square feet.

The Atlantic City Gaming Revenue Analysis© is a copyright of the Spectrum Gaming Group and Management Science Associates. It may not be forwarded, retransmitted or reproduced without permission.



Spectrumetrix Atlantic City Gaming Revenue Analysis
Last 12 Months (Detail) - Consolidated By Operator

L12M: OCTOBER 2020	AC Ocean Walk	Caesars Entertainment	DGMB Casino, LLC.	Hard Rock International	Landry's Inc.	MGM Resorts	Tropicana Entertainment	Total
Table Drop	\$359,919	\$768,947	\$201,274	\$518,761	\$139,649	\$617,740	\$215,877	\$2,822,167
% change	(23.2%)	(34.7%)	(28.8%)	(27.6%)	(49.5%)	(47.9%)	(37.7%)	(36.6%)
Win (excl. Poker)	\$54,138	\$128,340	\$26,854	\$69,598	\$25,824	\$103,496	\$38,043	\$446,292
% change	(5.1%)	(37.4%)	(40.2%)	(35.6%)	(48.8%)	(50.5%)	(37.0%)	(39.3%)
Hold Percentage	15.0%	16.7%	13.3%	13.4%	18.5%	16.8%	17.6%	15.8%
pct. point change	2.9%	(0.7%)	(2.5%)	(1.7%)	0.3%	(0.9%)	0.2%	(2.5%)
Normalized Win(@ 15.6%)	\$56,147	\$119,956	\$31,399	\$80,927	\$21,785	\$96,367	\$33,677	\$440,258
% change	(23.2%)	(34.7%)	(28.8%)	(27.6%)	(49.5%)	(47.9%)	(37.7%)	(36.6%)
No. table (ex. poker)	113	367	74	151	70	189	103	1,066
Win/tbl/day(ex. poker)	\$1,857	\$1,349	\$1,402	\$1,783	\$1,414	\$2,304	\$1,421	\$1,638
% change	35.1%	(7.5%)	(19.3%)	(10.2%)	(16.1%)	(25.7%)	(8.1%)	(11.1%)
Share # tbls (ex. poker)	10.6%	34.4%	6.9%	14.1%	6.6%	17.7%	9.7%	100.0%
Share tbl win (ex. poker)	12.1%	28.8%	6.0%	15.6%	5.8%	23.2%	8.5%	100.0%
Fair Share +/- bps	158	(566)	(91)	147	(82)	550	(117)	
Poker Win	\$239	\$1,842			\$409	\$7,122	\$715	\$10,327
% change	(83.9%)	(62.3%)			(60.4%)	(60.5%)	(65.1%)	(62.5%)
Poker win/table/day	\$325	\$117			\$176	\$362	\$153	\$240
% change	(36.1%)	(32.1%)			(44.2%)	(33.0%)	(50.9%)	(35.0%)
Total Table Win (incl. Poker/Keno)	\$54,377	\$130,181	\$26,854	\$69,598	\$26,233	\$110,618	\$38,759	\$456,619
% change	(7.1%)	(37.9%)	(40.2%)	(35.6%)	(49.0%)	(51.3%)	(37.9%)	(40.1%)
Slots Handle	\$1,263,034	\$3,853,194	\$890,539	\$1,578,003	\$876,373	\$3,017,376	\$1,479,638	\$12,958,156
% change	(13.6%)	(38.3%)	(39.1%)	(30.2%)	(44.9%)	(47.0%)	(41.5%)	(39.0%)
Slot Win	\$131,280	\$341,644	\$82,830	\$150,323	\$83,323	\$264,694	\$140,606	\$1,194,701
% change	(6.5%)	(37.5%)	(39.1%)	(29.0%)	(44.1%)	(45.0%)	(42.6%)	(37.4%)
Hold Percentage	10.4%	8.9%	9.3%	9.5%	9.5%	8.8%	9.5%	9.2%
pct. point change	0.8%	0.1%	0.0%	0.2%	0.1%	0.3%	(0.2%)	1.3%
No. Slots	1,800	5,686	1,430	2,166	1,400	2,859	2,351	17,692
Win/slot/day	\$282	\$232	\$224	\$268	\$230	\$389	\$231	\$264
% change	39.9%	(11.1%)	(14.3%)	(3.0%)	(18.6%)	(16.4%)	(19.3%)	(10.1%)
Daily WPU Perf Index	1.07	0.88	0.85	1.02	0.87	1.47	0.87	
Share # slots	10.2%	32.1%	8.1%	12.2%	7.9%	16.2%	13.3%	100.0%
Share of slot win	11.0%	28.6%	6.9%	12.6%	7.0%	22.2%	11.8%	100.0%
Fair Share +/- bps	81	(354)	(115)	34	(94)	599	(152)	
Promotional Credits	\$33,306	\$61,596	\$16,751	\$28,699	\$17,749	\$45,213	\$24,244	\$227,558
% change	(7.2%)	(23.0%)	(39.7%)	(38.7%)	(45.7%)	(44.5%)	(44.8%)	(34.7%)
Win/Slot Promo Credit	\$3.94	\$5.55	\$4.94	\$5.24	\$4.69	\$5.85	\$5.80	\$5.25

State Benchmark	0.75	1.06	0.94	1.00	0.89	1.12	1.10	
Potential Gain (Win)	\$43,575		\$5,110	\$349	\$9,859			
Savings (Promo Credits)		\$3,479				\$5,205	\$2,538	
Slot+Table (ex. Poker) Win	\$185,418	\$469,983	\$109,684	\$219,921	\$109,147	\$368,190	\$178,650	\$1,640,993
No. positions	2,475	7,887	1,874	3,069	1,823	3,991	2,971	24,090
Win/position/day	\$289	\$230	\$226	\$277	\$231	\$388	\$232	\$267
% change	38.6%	(10.1%)	(15.5%)	(5.5%)	(18.0%)	(19.2%)	(17.1%)	(10.4%)
Share # positions	10.3%	32.7%	7.8%	12.7%	7.6%	16.6%	12.3%	100.0%
Share of Win	11.3%	28.6%	6.7%	13.4%	6.7%	22.4%	10.9%	100.0%
Fair Share +/- bps	102	(411)	(109)	66	(92)	587	(145)	
SportsBook Win	\$16,838	\$2,480	\$89,399	\$5,206	\$1,160	\$26,178	\$1,520	\$142,780
% change	(7.4%)	(56.6%)	14.9%	59.2%	(47.8%)	254.3%	(22.1%)	22.5%
Simulcast Win						\$1,153		\$1,153
% change						(47.8%)		(47.8%)
Internet Win	\$8,892	\$86,902	\$189,367	\$51,960	\$299,625	\$175,056	\$65,724	\$877,526
% change	56.6%	59.1%	122.5%	150.0%	87.1%	149.5%	50.6%	99.4%
Total Win	\$211,387	\$561,206	\$388,450	\$277,087	\$410,342	\$577,699	\$246,608	\$2,672,780
% change	(5.1%)	(31.3%)	13.0%	(19.4%)	13.1%	(26.7%)	(30.1%)	(17.3%)
Total Win Per Square Ft. Gaming Space	\$2,132	\$1,873	\$6,555	\$3,009	\$6,973	\$4,744	\$2,697	\$3,251
% change	26.3%	(8.4%)	50.7%	6.4%	50.7%	(2.6%)	(5.7%)	10.3%

Dollar amounts in thousands, except daily wins-per-unit and square feet.

The Atlantic City Gaming Revenue Analysis© is a copyright of the Spectrum Gaming Group and Management Science Associates. It may not be forwarded, retransmitted or reproduced without permission.

